

# How to create OpenDocument URL's with SAP BusinessObjects BI 4.0



Creator:	Pieter Verstraeten
Twitter:	<a href="http://www.twitter.com/pverstraeten">http://www.twitter.com/pverstraeten</a>
Blog:	<a href="http://www.pieterverstraeten.com/blog">http://www.pieterverstraeten.com/blog</a>

## How to create OpenDocuments URL's with SAP BO BI4.0

---

Hi,

Thanks for downloading this manual on [www.pieterverstraeten.com](http://www.pieterverstraeten.com). Currently I'm working on a SAP BusinessObjects BI4 ramp-up project. One of the functionalities we are using is OpenDocument. I read a lot of documentation on the SAP service market place. During the implementation we note that not all documentation from SAP is up to date. This guide provides you with information for constructing parameterized URLs with the OpenDocument syntax.

If you have any questions or suggestions, don't hesitate to contact me!

Regards,  
Pieter Verstraeten

## 1. What is OpenDocument

OpenDocument is one of many deployed web applications within an SAP BusinessObjects Enterprise system. It processes incoming URL requests for documents and any other viewable object type in the Central Management Server (CMS), and delivers the correct document to the end user in the appropriate viewer. This allows you to send users direct links to a document and avoid having them navigate through a folder hierarchy, such as in BI launch pad. The OpenDocument syntax and its parameters allow you to construct URLs that link to these documents. For example, consider the following URL:

```
http://<servername>:<port>/BOE/OpenDocument/opensdoc/openDocument.jsp?iDocID=Aa6GrrM79cRAmaOSMGoadKI&siDType=CUID
```

**Note:**

Replace <servername>:<port> with the name and port number of your web server where OpenDocument is deployed.

This URL accesses the object in the CMS with the CUID value of Aa6GrrM79cRAmaOSMGoadKI. If this is a Crystal report, for example, then the report is rendered to the user in a default SAP Crystal Reports viewer. In this example, iDocID is one of many URL parameters. These parameters specify how to access a particular document in the CMS, or determine how to display the document to the user.

You can link to many viewable object types with the OpenDocument syntax. Some examples include:

- Crystal reports
- Interactive Analysis documents
- Advanced Analysis workspaces
- BI launch pad workspaces
- Dashboard Design objects

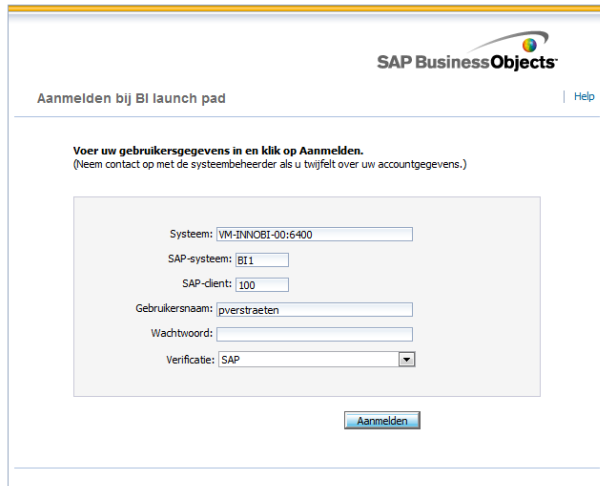
Some of the designers for these BI document types provide GUI-based URL builders to help you embed openDocument URLs into your documents. Consult their respective product documentation for information on these features.

*(Source: SAP AG)*

# How to create OpenDocuments URL's with SAP BO BI4.0

## 2. Steps to create OpenDocument URL's

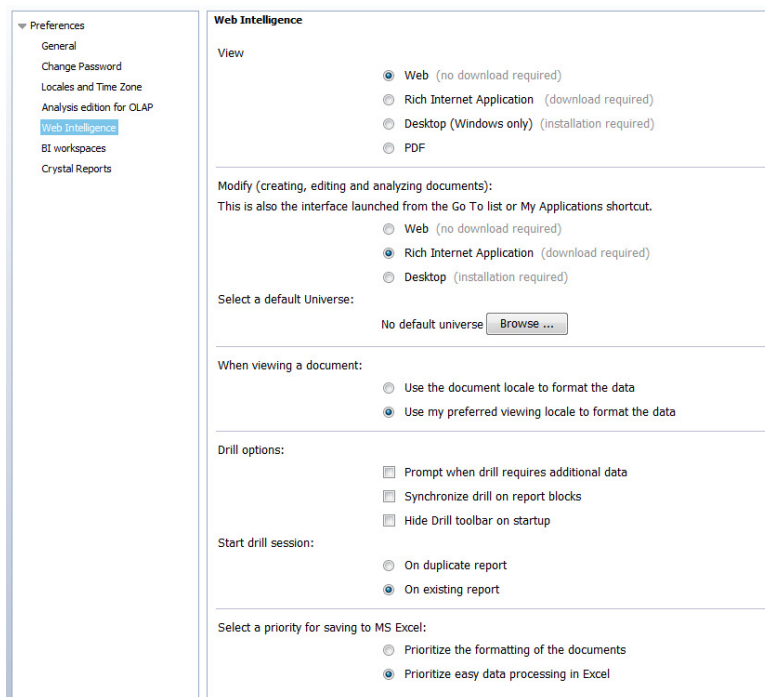
OpenDocument is working with the Web version of WebIntelligence. The client version of WebIntelligence is **not** supported!



Step 1: Ligon into BI Launchpad

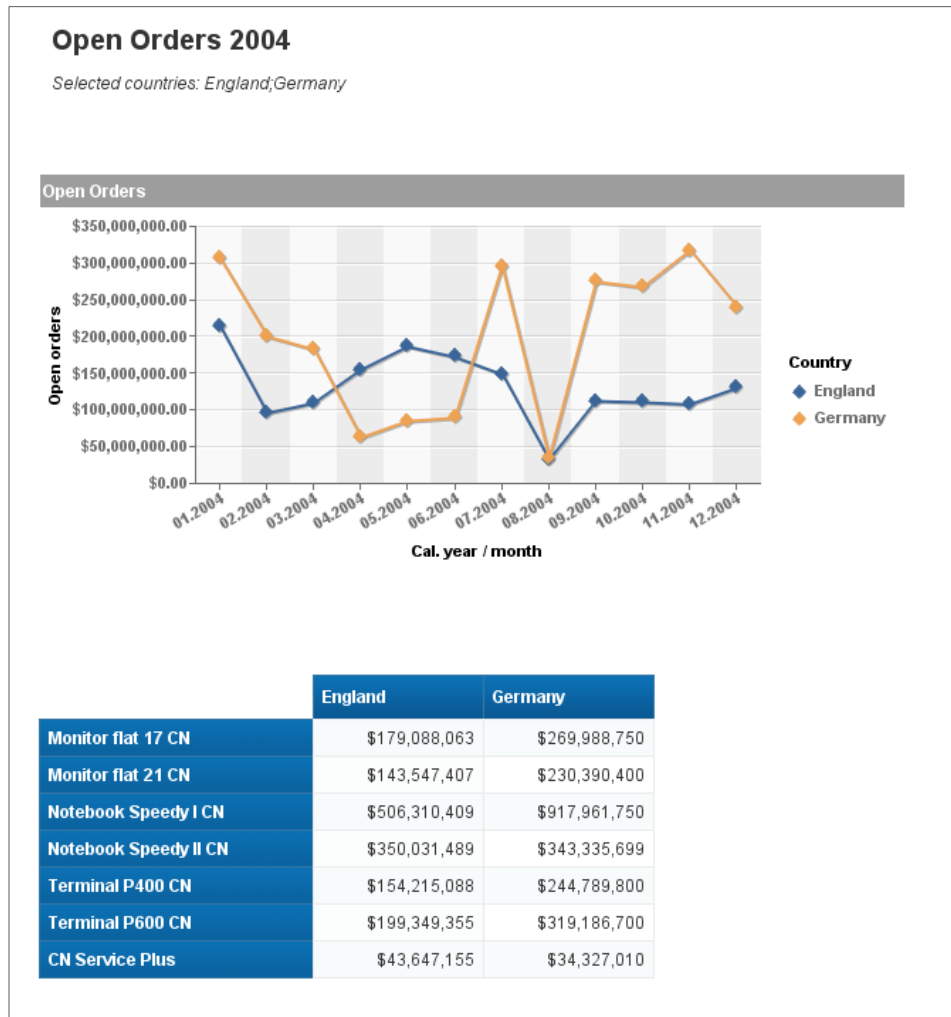


Step 2: Open your preferences



Step 3: Navigate to "Web Intelligence". Select "Web (no download required)" under View. This modus is required to use OpenDocument URL's.  
Click Save & Close.

# How to create OpenDocuments URL's with SAP BO BI4.0



Step 4: I created a simple WebIntelligence document with two reportfilters:

- Filter by Calendar Year (SAP BW BEx filter)
- Filter by Country (WebI filter)

Both filters can be used in OpenDocument URL's.

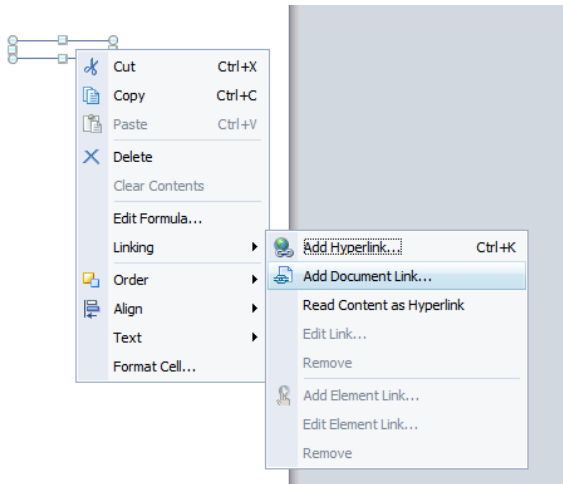
For this document we will create an OpenDocument URL. Follow the next steps to create your own URL. First open your WebIntelligence document in the Design mode.

	Germany	England
CN Service Plus	\$34,327,010	\$43,647,155
Monitor flat 17 CN	\$269,988,750	\$179,088,063
Monitor flat 21 CN	\$230,390,400	\$143,547,407
Notebook Speedy I CN	\$917,961,750	\$506,310,409
Notebook Speedy II CN	\$343,335,699	\$350,031,488
Terminal P400 CN	\$244,789,800	\$154,215,088
Terminal P600 CN	\$319,186,700	\$199,349,355

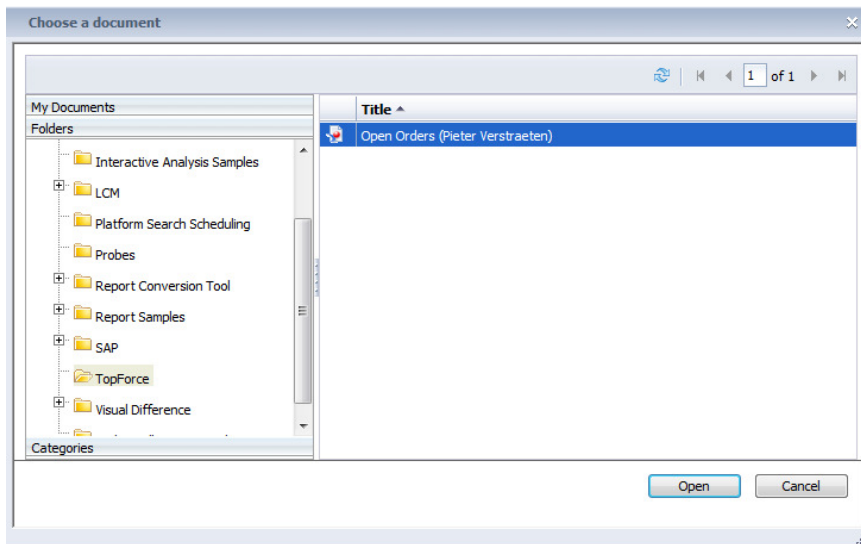


Step 5: Insert a blank cell into your document.

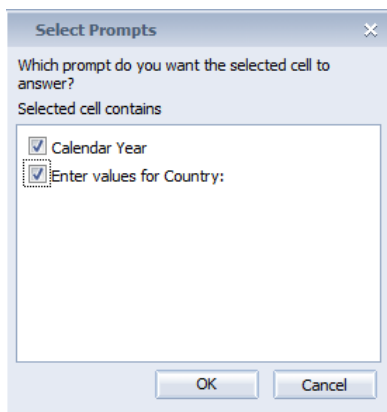
# How to create OpenDocuments URL's with SAP BO BI4.0



Step 6: Right click with your mouse on the blank cell. Select “Linking → Add Document Link...”. A new window will open. Click Browse...

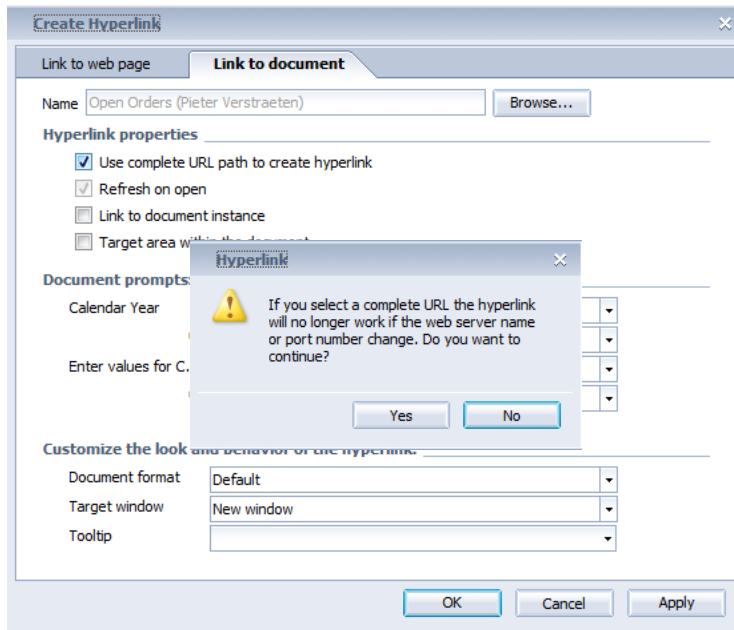


Step 7: Find the WebIntelligence document for which you want to create the OpenDocument URL. Click Open.



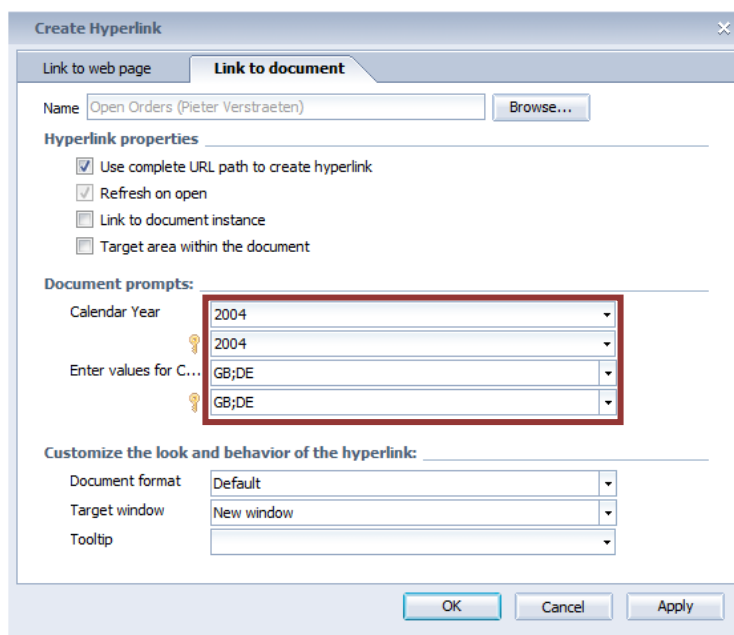
Step 8: If your document has one or more variables, the screen above will appear. I'll select the two prompt for my OpenDocument URL. Click OK.

# How to create OpenDocuments URL's with SAP BO BI4.0



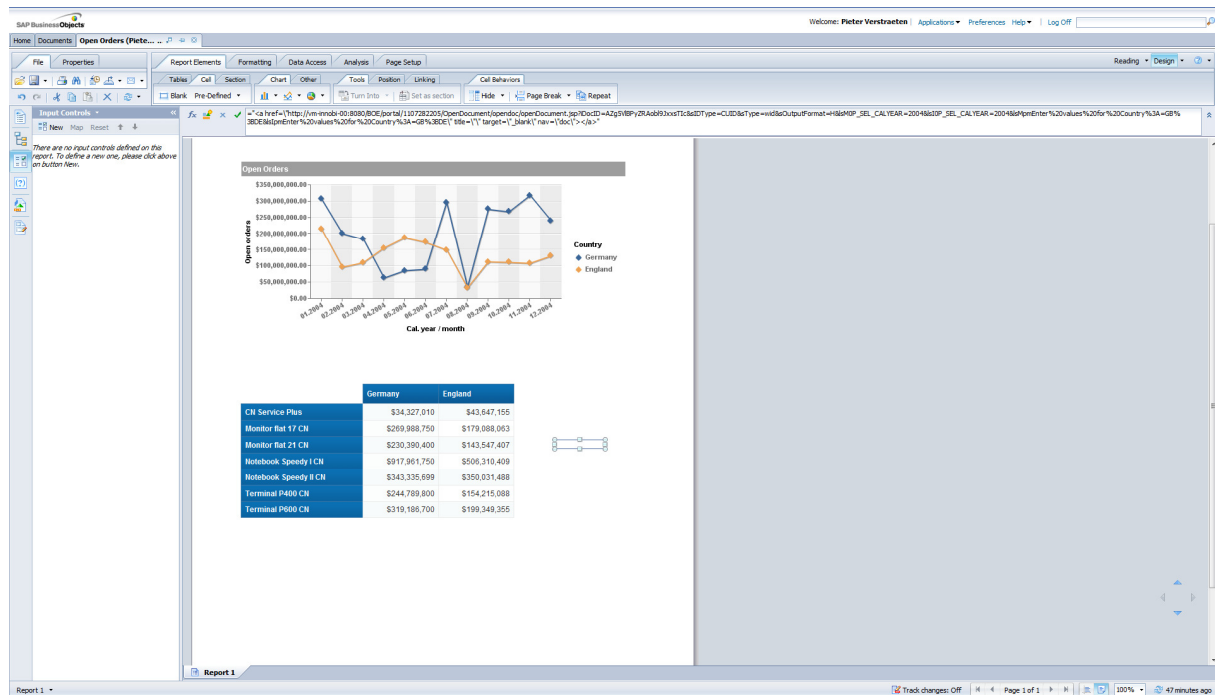
Step 9: Select “Use complete URL path to create hyperlink”. Accept the message by clicking Yes.

Note: When you select “Target area within the document”, it’s possible to jump to a specific report tab in the WebIntelligence document.



Step 10: Enter the values for the selected prompts. Use the semicolon (“;”) as separator. Click OK.

# How to create OpenDocuments URL's with SAP BO BI4.0



Step 11: You can find the URL in the cell you created in step 5. This URL can be used in your Dashboard, Crystal Report or WebIntelligence Document. If you want to test the URL, copy and paste it in your web browser.

## OpenDocument URL Example:

[http://vm-innobi-](http://vm-innobi-00:8080/BOE/portal/1107282205/OpenDocument/opensdoc/openDocument.jsp?iDocID=AZg5VIBPyZR)

[00:8080/BOE/portal/1107282205/OpenDocument/opensdoc/openDocument.jsp?iDocID=AZg5VIBPyZR  
Aobi9JxxsTlc&sIDType=CUID&sType=wid&sOutputFormat=H&lsMOP\\_SEL\\_CALYEAR=2004&lsIOP\\_SEL\\_  
CALYEAR=2004&lsMpmEnter%20values%20for%20Country%3A=GB%3BDE&lsIpmEnter%20values%2  
0for%20Country%3A=GB%3BDE](http://vm-innobi-00:8080/BOE/portal/1107282205/OpenDocument/opensdoc/openDocument.jsp?iDocID=AZg5VIBPyZR&sIDType=CUID&sType=wid&sOutputFormat=H&lsMOP_SEL_CALYEAR=2004&lsIOP_SEL_CALYEAR=2004&lsMpmEnter%20values%20for%20Country%3A=GB%3BDE&lsIpmEnter%20values%20for%20Country%3A=GB%3BDE)

If you see the variables, "OP\_SEL\_CALYEAR" is a variable from SAP BEx and the other variable ("lsMpmEnter%20values%20for%20Country%3A") is coming from WebIntelligence. Notice that some strange characters are used, for example: "%20". These characters are encoded characters. On the next page you'll find a table with the most encoded characters.



# How to create OpenDocuments URL's with SAP BO BI4.0

ASCII Character	URL-encoding
space	%20
!	%21
"	%22
#	%23
\$	%24
%	%25
&	%26
'	%27
(	%28
)	%29
*	%2A
+	%2B
,	%2C
-	%2D
.	%2E
/	%2F
0	%30
1	%31
2	%32
3	%33
4	%34
5	%35
6	%36
7	%37
8	%38
9	%39
:	%3A
;	%3B
<	%3C
=	%3D
>	%3E
?	%3F
@	%40
A	%41
B	%42
C	%43
D	%44
E	%45
F	%46
G	%47
H	%48
I	%49
J	%4A
K	%4B
L	%4C
M	%4D
N	%4E
O	%4F
P	%50
Q	%51
R	%52
S	%53
T	%54
U	%55
V	%56
W	%57
X	%58
Y	%59
Z	%5A
[	%5B
\	%5C
]	%5D
^	%5E
_	%5F
~	%60
a	%61
b	%62
c	%63
d	%64
e	%65
f	%66
g	%67
h	%68
i	%69
j	%6A

ASCII Character	URL-encoding
k	%6B
l	%6C
m	%6D
n	%6E
o	%6F
p	%70
q	%71
r	%72
s	%73
t	%74
u	%75
v	%76
w	%77
x	%78
y	%79
z	%7A
{	%7B
	%7C
}	%7D
~	%7E
€	%7F
€	%80
€	%81
€	%82
€	%83
€	%84
€	%85
€	%86
€	%87
€	%88
€	%89
€	%8A
€	%8B
€	%8C
€	%8D
€	%8E
€	%8F
€	%90
€	%91
€	%92
€	%93
€	%94
€	%95
€	%96
€	%97
€	%98
€	%99
€	%9A
€	%9B
€	%9C
€	%9D
€	%9E
€	%9F
€	%A0
€	%A1
€	%A2
€	%A3
€	%A4
€	%A5
€	%A6
€	%A7
€	%A8
€	%A9
€	%AA
€	%AB
€	%AC
€	%AD
€	%AE
€	%AF
€	%B0
€	%B1
€	%B2
€	%B3
€	%B4
€	%B5

ASCII Character	URL-encoding
ŀ	%B6
•	%B7
ˆ	%B8
ı	%B9
o	%BA
»	%BB
¼	%BC
½	%BD
¾	%BE
¿	%BF
À	%C0
Á	%C1
Â	%C2
Ã	%C3
Ä	%C4
Å	%C5
Æ	%C6
Ç	%C7
È	%C8
É	%C9
Ê	%CA
Ë	%CB
Ì	%CC
Í	%CD
Î	%CE
Ï	%CF
Ð	%D0
Ñ	%D1
Ò	%D2
Ó	%D3
Ô	%D4
Õ	%D5
Ö	%D6
Ø	%D7
ø	%D8
Ù	%D9
Ú	%DA
Û	%DB
Ü	%DC
Ý	%DD
Þ	%DE
ß	%DF
à	%E0
á	%E1
â	%E2
ã	%E3
ä	%E4
å	%E5
æ	%E6
ç	%E7
è	%E8
é	%E9
ê	%EA
ë	%EB
ì	%EC
í	%ED
î	%EE
ï	%EF
ð	%F0
ñ	%F1
ò	%F2
ó	%F3
ô	%F4
õ	%F5
ö	%F6
÷	%F7
ø	%F8
ù	%F9
ú	%FA
û	%FB
ü	%FC
ý	%FD
þ	%FE
ÿ	%FF

## 3. Parameters Reference

If you want to use more OpenDocument parameters (for example: IsM, sRefresh, sReportName), download the documentation on help.sap.com:

[http://help.sap.com/businessobject/product\\_guides/boexir4/en/xi4\\_opendocument\\_en.pdf](http://help.sap.com/businessobject/product_guides/boexir4/en/xi4_opendocument_en.pdf)