

# Adapt your SAP BW and SAP BO authorizations



Creator:	Pieter Verstraeten
Twitter:	<a href="http://www.twitter.com/pverstraeten">http://www.twitter.com/pverstraeten</a>
Blog:	<a href="http://www.pieterverstraeten.com/blog">http://www.pieterverstraeten.com/blog</a>

# SAP BW & SAP BusinessObjects

---

Dear reader,

Thanks for downloading this manual on [www.pieterverstraeten.com](http://www.pieterverstraeten.com). This manual will describe a best practice to adapt your SAP BW and SAP BO authorizations. If you use a logical structure of InfoArea's with authorizations in your SAP BW datawarehouse, you can re-use this structure and authorizations in your SAP BO environment. I'll not explain the authorization concepts in detail but only how you can combine the SAP BW and SAP BO authorizations.

After reading this manual and implementing the solution, you're able to assign SAP BW roles to users and they have automatically access to the SAP BO environment. It's not needed anymore to provide access in SAP BW **and** in SAP BO, this is an automatically process.

Enjoy this manual and if you have any questions or suggestions, don't hesitate to contact me!

Regards,

Pieter Verstraeten

## Type users

In this scenario I assume that we have three different types of users in the demo organization:

- EndUsers : able to execute the reports (BW and BO) within a specific subarea
- ExpertUsers : able to create BEx query's and BO reports within a specific subarea
- Key Users : able to create BEx query's and BO reports within a specific area

## Setup of InfoArea's

The demo organization uses the Layered Scalable Architecture. The Architected Data Mart layer contains only MultiProviders and authorizations are based on the lowest InfoArea level. In this example MultiProviders can be added on level 3.

ADM - Architected Data Mart layer	DEMO_ADM	
Technical Content	DEMO_ADM_001	
BI Statistics	DEMO_ADM_001_001	
Human Resources	DEMO_ADM_002	
Information Technology	DEMO_ADM_003	
Finance	DEMO_ADM_004	Level 1
Controlling	DEMO_ADM_004_001	Level 2
Overhead Cost Controlling	DEMO_ADM_004_001_001	Level 3
Profitability Analysis	DEMO_ADM_004_001_002	
Financial Accounting	DEMO_ADM_004_002	
Accounts Receivable	DEMO_ADM_004_002_001	
Accounts Payable	DEMO_ADM_004_002_002	
Operational Expenditures	DEMO_ADM_004_003	
Procurement	DEMO_ADM_005	
Cross Domain	DEMO_ADM_006	

## Setup of the Authorization Model

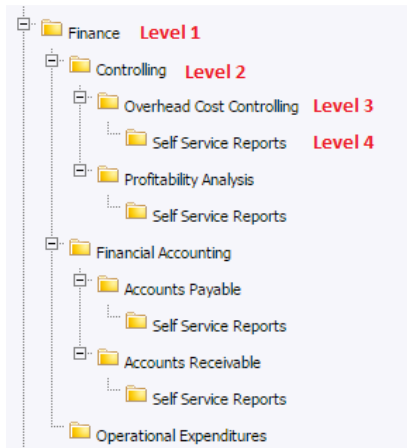
This document will not describe the roles in detail, for each InfoArea three different types of composite roles were created (each composite roles contains single roles with specific authorizations):

- ENDUSER
- EXPERTUSER
- KEYUSER

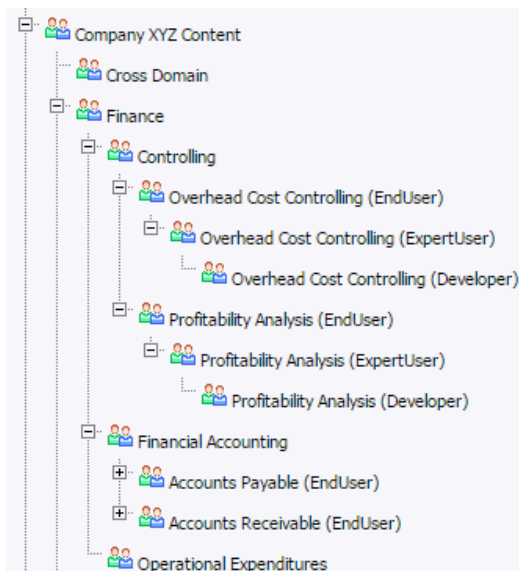
Composite role	Role name
C_004_001_001_ENDUSER	Overhead Cost Controlling EndUser
C_004_001_001_EXPERTUSER	Overhead Cost Controlling ExpertUser
C_004_001_002_ENDUSER	Profitability Analysis EndUser
C_004_001_002_EXPERTUSER	Profitability Analysis ExpertUser
C_004_002_001_ENDUSER	Accounts Receivable EndUser
C_004_002_001_EXPERTUSER	Accounts Receivable ExpertUser
C_004_002_002_ENDUSER	Accounts Payable EndUser
C_004_002_002_EXPERTUSER	Accounts Payable ExpertUser
C_004_KEYUSER	Finance KeyUser

## Setup your SAP BO folders and authorization structure

Logon via the Central Management Console in your SAP BO environment. First of all you need to create the folders and subfolders, use the same structure as your InfoArea structure. Below you can see an example for the Finance area. EndUsers can execute reports on level 3 and level 4. ExpertUsers have authorizations to create, modify and delete reports in the Self Service Reports. KeyUsers will have the authorizations for all folders within the Finance area, they can also create their own reports in the Self Service Folders.

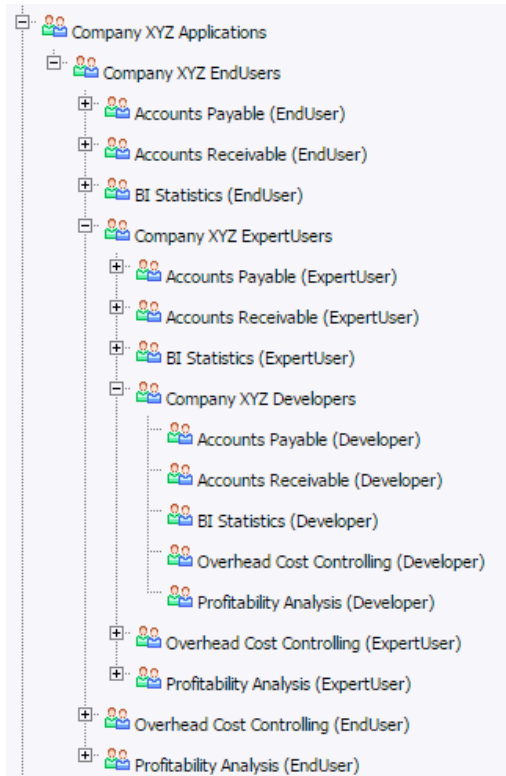


After the folder creation you need to create the BO usergroups. We will split the CONTENT authorization from the APPLICATION authorization. Create the content authorization structure first, use the **same structure** as your folder structure! For each level 3 folder we need 3 different types of BO users (EndUser, ExpertUser, Developer).



# SAP BW & SAP BusinessObjects

If you created the content structure, you can start creating the application authorization structure. Below the “Company XYZ EndUsers” usergroup you need to assign all the EndUser groups including the “Company XYZ ExpertUsers” usergroup. The “Company XYZ ExpertUsers” usergroup contains all ExpertUsers usergroups including the “Company XYZ Developers” usergroup, the “Company XYZ Developers” usergroup contains all Developers usergroups.



When you finished with the authorization usergroups, we will start assigning the rights to the folders. Let’s check the authorization for the “Overhead Cost Controlling” folder. I used three access levels (Content\_View\_This\_Level\_Only, Content\_Create and Content\_View). Define these access levels by yourself.

First assign the security for the Finance folder. Users are only allowed to see this folder. Therefore the access level “Content\_View\_This\_Level\_Only” has been created.

Name	Full Name	Type	Access
Administrators		User Group	Full Control (Inherited)
Company XYZ EndUsers		User Group	No Access
Everyone		User Group	No Access
Finance		User Group	Content_View_This_Level_Only

# SAP BW & SAP BusinessObjects

The Controlling folder has the same properties as the Finance folder.

**User Security: Controlling**

Hide Navigation

Properties  
User Security  
Limits

Add Principals Remove View Security Assign Security

Name	Full Name	Type	Access
Administrators		User Group	Full Control (Inherited)
Company XYZ EndUsers		User Group	No Access
Controlling		User Group	Content_View_This_Level_Only
Everyone		User Group	No Access
Finance		User Group	No Access

Reset Security Settings

Now we will assign authorizations to the “Overhead Cost Controlling” folder.

**User Security: Overhead Cost Controlling**

Hide Navigation

Properties  
User Security  
Limits

Add Principals Remove View Security Assign Security

Name	Full Name	Type	Access
Administrators		User Group	Full Control (Inherited)
Company XYZ EndUsers		User Group	No Access
Controlling		User Group	No Access
Everyone		User Group	No Access
Finance		User Group	No Access
Overhead Cost Controlling (Developer)		User Group	Content_Create; Content_View (Inherited)
Overhead Cost Controlling (EndUser)		User Group	Content_View
Overhead Cost Controlling (ExpertUser)		User Group	Content_View

Reset Security Settings

EndUsers: will have the Content\_View accesslevel, they can only execute reports in this folder  
 ExpertUsers: will have the Content\_View accesslevel, they can only execute reports in this folder  
 Developers: will have the Content\_Create accesslevel, they are allowed to create reports in this folder

The Self Service folder below the “Overhead Cost Controlling” folder will have the following authorizations:

**User Security: Self Service Reports**

Hide Navigation

Properties  
User Security  
Limits

Add Principals Remove View Security Assign Security

Name	Full Name	Type	Access
Administrators		User Group	Full Control (Inherited)
Company XYZ EndUsers		User Group	No Access
Controlling		User Group	No Access
Everyone		User Group	No Access
Finance		User Group	No Access
Overhead Cost Controlling (Developer)		User Group	Content_View (Inherited); Content_Create (Inherited)
Overhead Cost Controlling (EndUser)		User Group	Content_View (Inherited)
Overhead Cost Controlling (ExpertUser)		User Group	Content_Create; Content_View (Inherited)

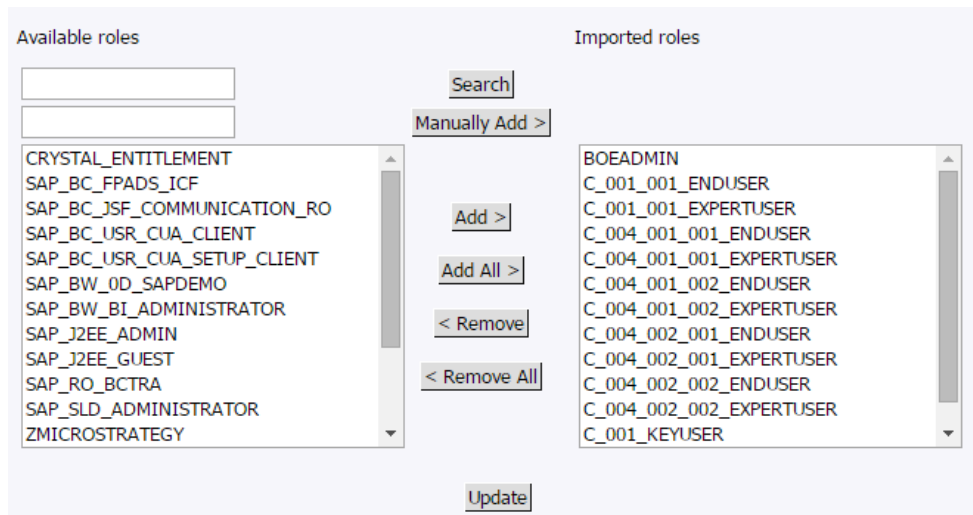
Reset Security Settings

Add the Content\_Create accesslevel for the ExpertUser manually. Other accesslevels will be assigned automatically (inherited).

## Import the SAP BW roles into SAP BO

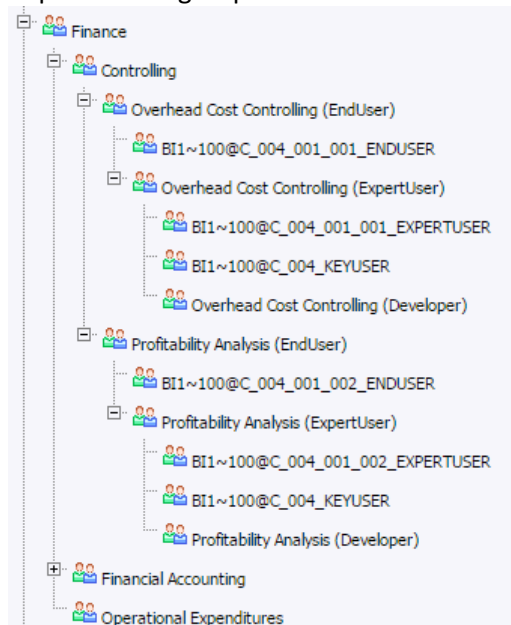
Before you can import the SAP BW roles, please assign the composite roles first to a temporary user. Roles that are **not** assigned in BW cannot be viewed in SAP BO.

Go to “Authentication” in the Central Management Console. Double-click on SAP and click on the tab “Role Import”. On the left side you’ll see all the available SAP BW roles (don’t forget to assign these roles to a temporary user). Add these roles to the right and click on “Update”.



## Assign the SAP BW roles to the SAP BO usergroups

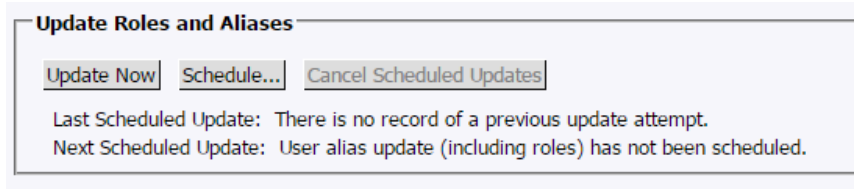
The SAP BW roles that are imported into SAP BO are now available as a usergroup. Assign new imported usergroups as the screenshot below:



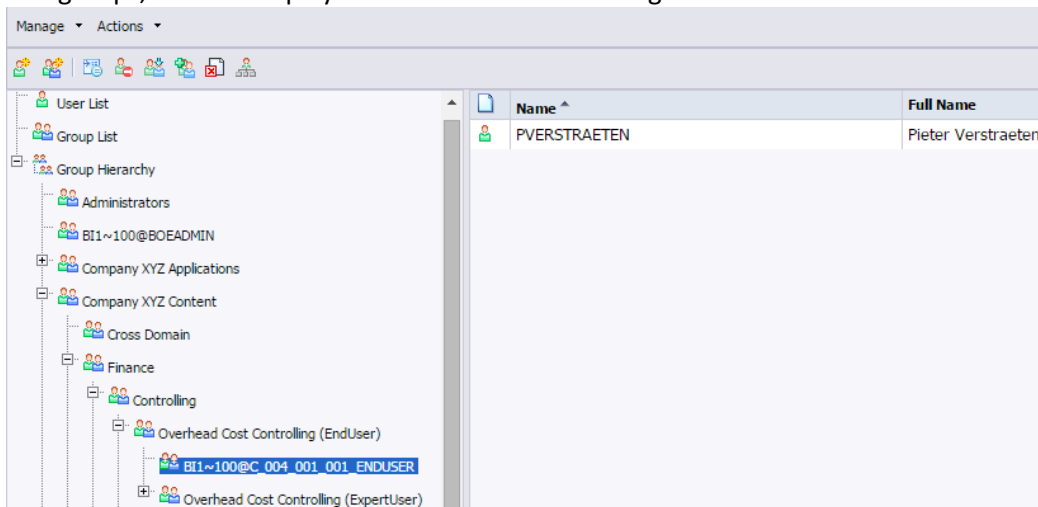
Standard the technical name of the SAP BW role will be displayed. Assign the correct SAP BW usergroups to each BO usergroup we defined earlier in this manual.

## Schedule job to synchronize the SAP BW users

You need to schedule a job in SAP BO for synchronizing the SAP BW users with SAP BO. Go to “Authentication” in the Central Management Console. Double-click on SAP and click on the tab “User Update”. Click on “Update Now” or create a schedule schema.



To test if the users are synchronized, you can go to the usergroups and select one of the SAP BW usergroups, this will display the SAP BW user on the right.



**With this concept you're able to assign authorizations in SAP BW and users will have automatically authorization in SAP BO!**